

ALTA/NSPS LAND TITLE SURVEY OF THE LANDS OF 1150 WEBSTER STREET INC. BUCHANAN PARK APARTMENTS UPDATED SEPTEMBER 09, 2016

LEGEND

DESCRIPTION

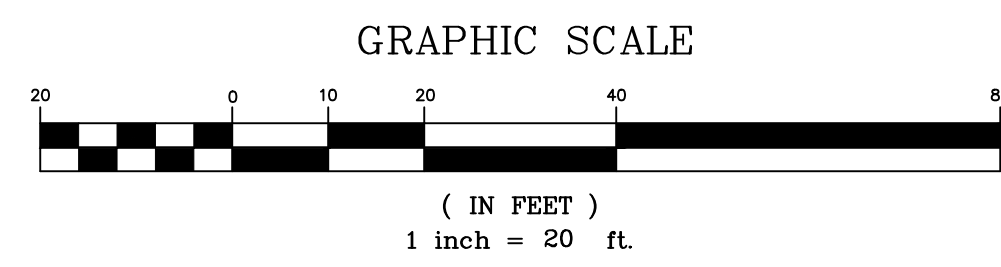
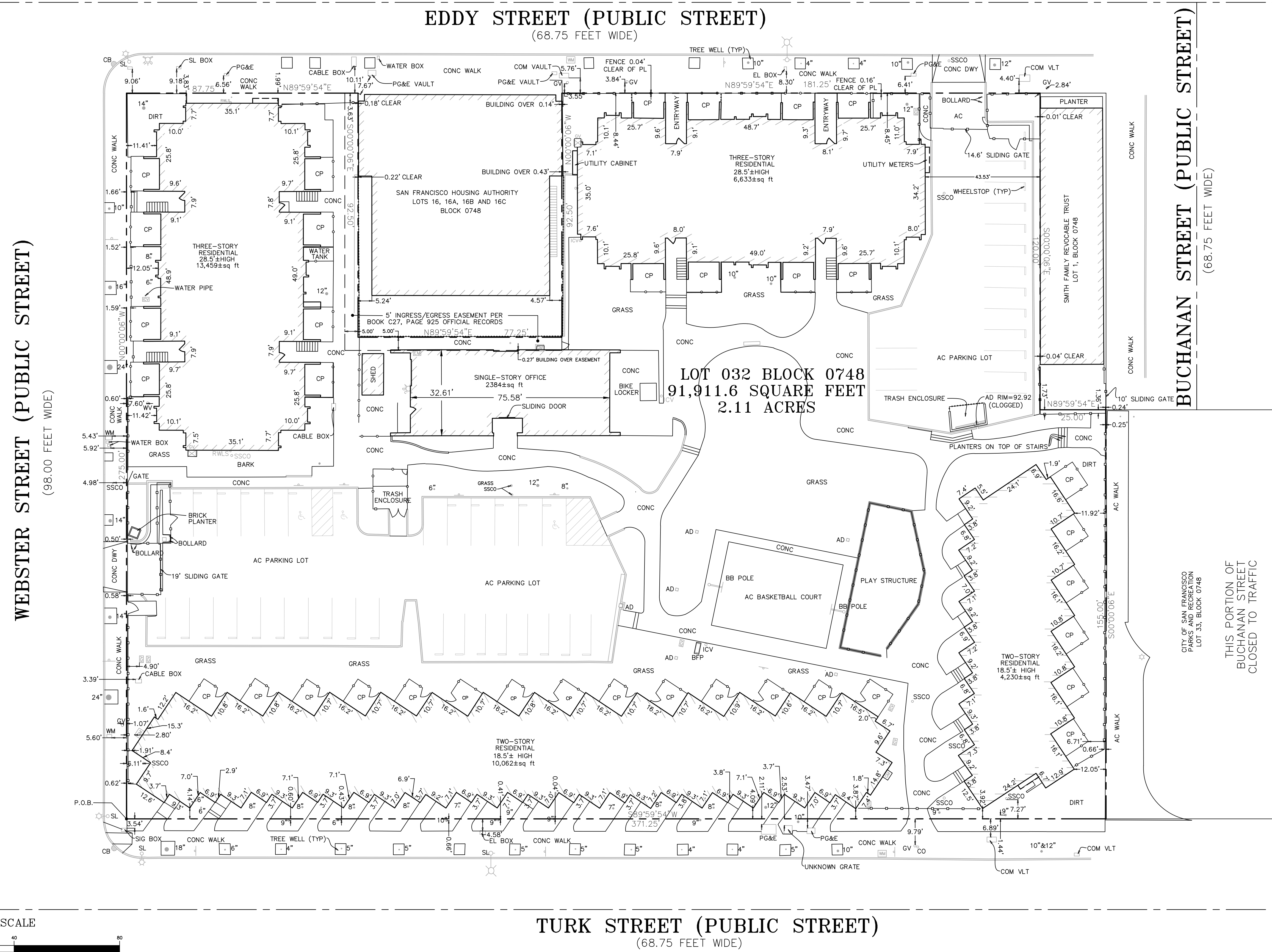
DESCRIPTION	EXISTING
CENTERLINE	
PROPERTY LINE	
BLDG LINE	
CURB	
LIP OF GUTTER	
HANDICAP RAMP	
STORM AREA DRAIN	
STORM DRAIN INLET	
FIRE HYDRANT	
FIRE DEPARTMENT CONNECTION	
ELECTROUJER	
SIGN	
STREET LIGHT	
JOINT UTILITY POLE	
TREE WITH TRUNK SIZE	
FENCE-CHAINLINK	
FENCE-WOOD	
FENCE-IRON	
EDGE OF PAVEMENT	

ABBREVIATIONS

AC	ASPHALT CONCRETE
AD	AREA DRAIN
CB	CATCH BASIN
CO	CLEAN OUT
CONC	CONCRETE
CP	CONCRETE PATIO
DR	DOOR
COM	COMMUNICATIONS
DS	DOWNSPOUT
DWF	DRIVEWAY
E/EL	ELECTRICAL
EL VLT	ELECTRICAL VAULT
EB	ELECTRICAL BOX
EC	EDGE OF CONCRETE
EM	ELECTRICAL METER
EP	EDGE OF PAVEMENT
FDC	FIRE DEPARTMENT CONNECTION
FH	FIRE HYDRANT
FF	FINISHED FLOOR ELEVATION
GM	GAS METER
GV	GAS VALVE
HC-HCR	HANDICAP RAMP ACCESSIBLE
HYD	FIRE HYDRANT
ICV	IRRIGATION CONTROL VALVE
JP	JOINT UTILITY POLE
LT	LIGHT
MH	MANHOLE
PIV	POST INDICATOR VALVE
P.O.B.	POINT OF BEGINNING
RTWL	RETAINING WALL
RMLS	RAIN WATER LEADER
SD	STORM DRAIN
SL	STREET LIGHT
SS	SANITARY SEWER
SSCO	SANITARY SEWER CLEANOUT
THRESHLD	THRESHOLD
TYP	TYPICAL
UNK	UNKNOWN
VLT	VAULT
W	WATER
WD	WOOD
WM	WATER METER
WV	WATER VALVE

BASIS OF BEARINGS

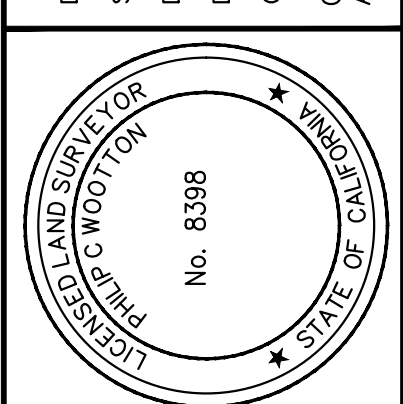
AN ASSUMED BEARING OF NORTH 0°00'06", OF THE RIGHT-OF-WAY LINE OF WEBSTER AVENUE, WAS TAKEN AS THE BASIS OF BEARINGS FOR THIS SURVEY.



DATE	ADDED BLDG DIMS REVISIONS	PCW BY
10/27/16		

ALTA/NSPS LAND TITLE SURVEY
BUCHANAN PARK APARTMENTS
1150 WEBSTER STREET
San Francisco
California

DATE: 09/09/2016
SCALE: 1"=20'
DRAWN BY: PCW
CHECKED BY: RVH
DESIGNED BY: RVH
COPYRIGHT 2016, CARROLL ENGINEERING
ALL RIGHTS RESERVED



1101 S. WINCHESTER BLVD.
SUITE 11-104
SAN FRANCISCO, CA 94116
TEL: 408-281-0900
FAX: 408-281-0905
E-MAIL: robert@carroll-engineering.com

CARROLL ENGINEERING
Engineers and Surveyors

SHEET
2
OF 2 SHEETS

JOB NO. 1977

Carroll Engineering, Inc. is a professional engineering firm. The engineer preparing these plans will not be responsible for, or liable for, unauthorized changes to or use of these plans. All changes to the plans must be in writing and must be approved by the preparer of these plans.