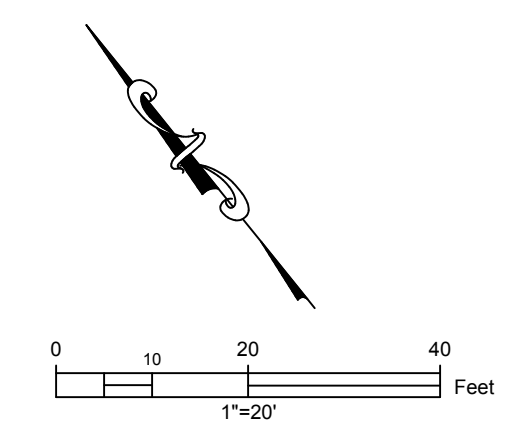
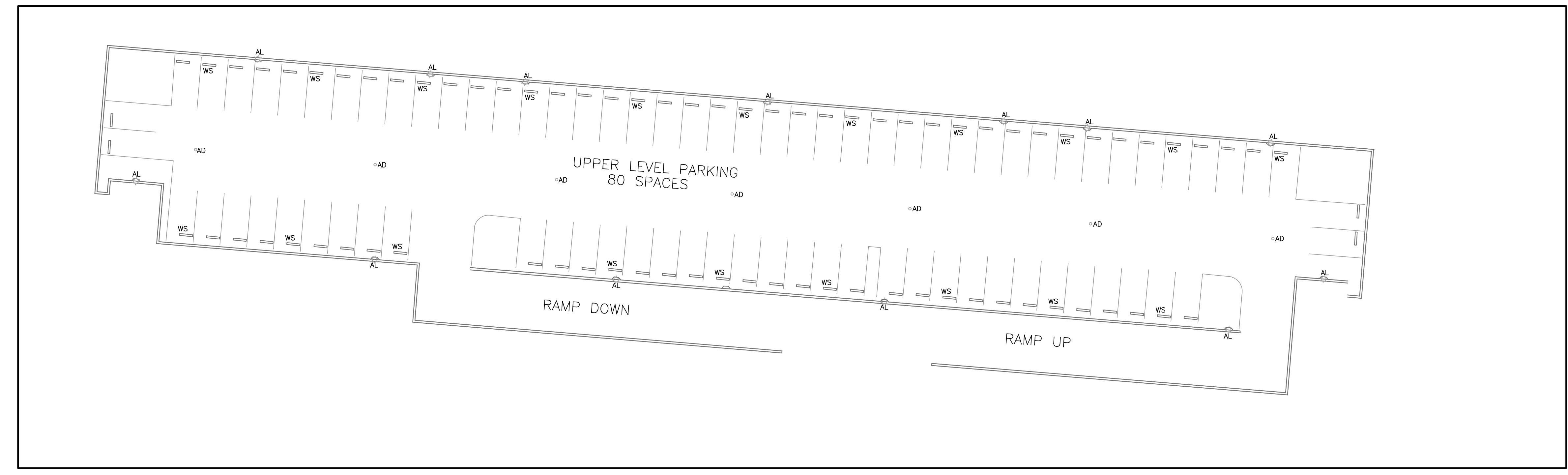
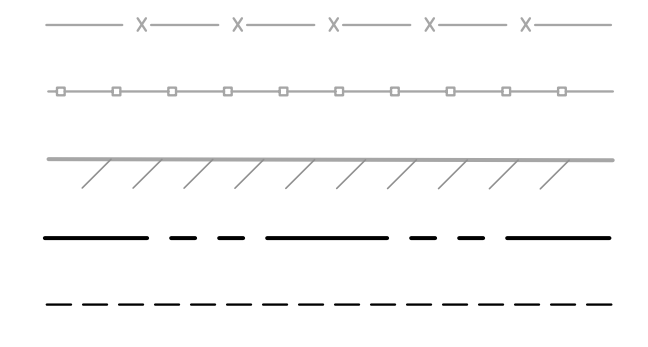


Contractor agrees that in accordance with generally accepted construction practices, construction contractor will be required to maintain safe and complete responsibility for all jobs. The conditions during the course of construction of the project include, but are not limited to, the safety of all persons and property, and the contractor shall be held responsible for all design professional services. The contractor shall be held responsible for all design professional services. The contractor shall be held responsible for all design professional services. The contractor shall be held responsible for all design professional services.

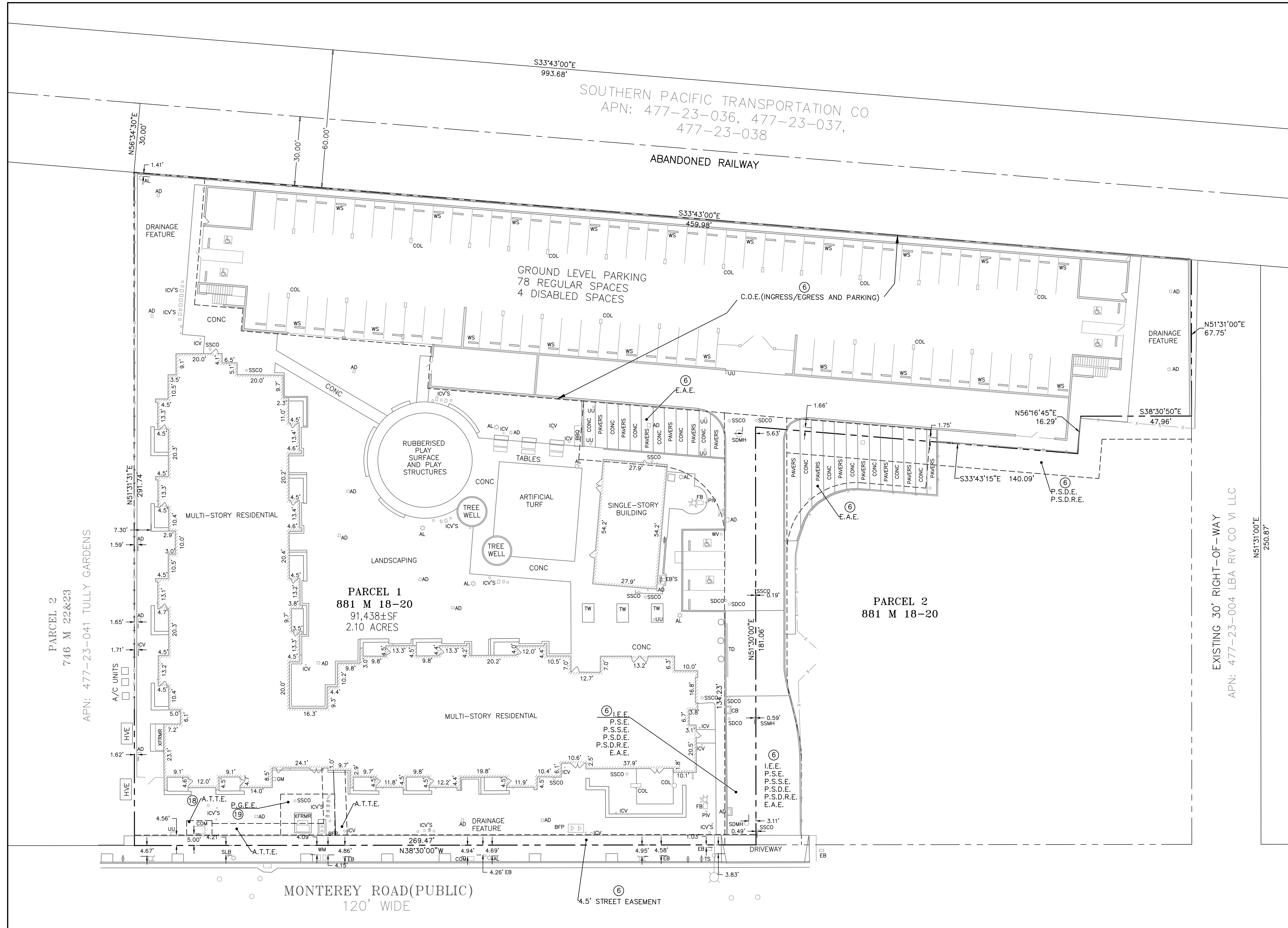


LEGEND
DESCRIPTION
 CHAINLINK FENCE
 WELDED IRON FENCE
 BUILDING LINE
 BOUNDARY LINE
 EASEMENT LINE



ABBREVIATIONS

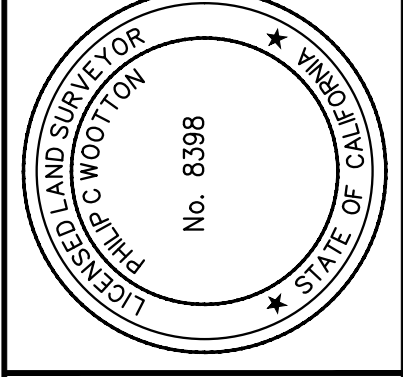
- AC ASPHALT CONCRETE
- AD AREA DRAIN
- AL AREA LIGHT
- A.T.T.E. AT&T EASEMENT
- BQ BARBEQUE
- BFP BACK FLOW PREVENTOR
- CB CATCH BASIN
- COL COLUMN
- COM COMMUNICATION BOX
- CONC CONCRETE
- EB ELECTRICAL BOX
- EAE EMERGENCY ACCESS EASEMENT
- FB FIRE BOX
- FDC FIRE DEPARTMENT CONNECTOR
- FH FIRE HYDRANT
- GM GAS METER
- HVE HIGH VOLTAGE ELECTRICAL
- ICV IRRIGATION CONTROL VALVE
- IEE INGRESS/EGRESS EASEMENT
- P.G.E.E. PG&E EASEMENT
- PIV POST INDICATOR VALVE
- PSDE PRIVATE STORM DRAIN EASEMENT
- PSDR PRIVATE STORM DRAIN RELEASE EASEMENT
- PSE PUBIC SERVICE EASEMENT
- PSSE PRIVATE SANITARY SEWER EASEMENT
- SDCO STORM DRAIN CLEANOUT
- SDMH STORM DRAIN MANHOLE
- SLB STREET LIGHT BOX
- SSCO SANITARY SEWER CLEANOUT
- SSMH SANITARY SEWER MANHOLE
- TD TRUNCATED DOME
- TS TRAFFIC SIGN
- TW TREE WELL
- UU UNKNOWN UTILITY
- WM WATER METER
- WS WHEEL STOP
- XFRMR TRANSFORMER



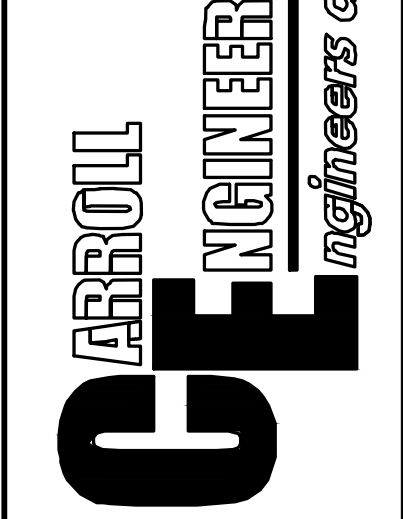
MARK	DATE	DESCRIPTION	BY

ALTA/NSPS LAND TITLE SURVEY
 2122 Monterey Hwy
 San Jose, California

DATE: 04/03/2017
 SCALE: 1" = 20'
 DRAWN BY: PCW
 DESIGNED BY: RVH
 CHECKED BY: CARROLL ENGINEERING
 ALL RIGHTS RESERVED



1101 S. WINCHESTER BLVD.
 SUITE 111-104
 TEL: 408-281-9000
 FAX: 408-281-0995
 E-MAIL: bryce@carroll-engineering.com



SHEET
T-3
 OF 3 SHEETS
 JOB NO. 1872

UNAUTHORIZED CHANGES & USES: The engineer preparing these plans will not be responsible for, or liable for, unauthorized changes to or uses of these plans. All changes to the plans must be in writing and must be approved by the preparer of these plans.