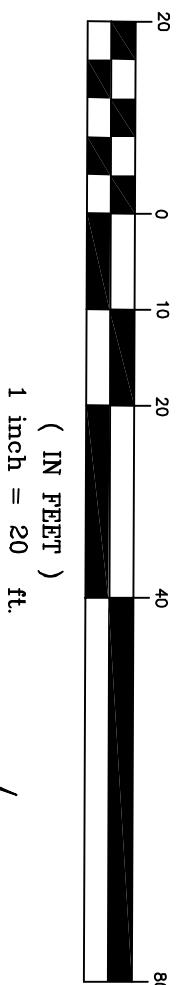
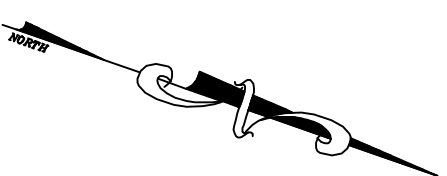


CURVE	LENGTH	RADIUS
C1	1.04	2.00
C2	3.62	7.00
C3	1.04	2.00
C4	1.04	2.00
C5	47.27	42.25
C6	49.92	47.25



GRAPHIC SCALE  
( IN FEET )  
1 inch = 20 ft.



LINE	LENGTH	BEARING
L1	19.46	N18°59'04"W
L2	19.46	N18°59'04"W
L3	5.00	N10°40'59"E
L4	3.68	N10°40'59"E
L5	40.22	N18°59'04"W
L6	37.50	N18°59'04"W
L7	40.18	N18°59'04"W
L8	38.79	N18°59'04"W
L9	5.00	S71°00'56"E
L10	20.00	N18°59'04"W
L11	4.24	N63°59'04"W

**BASIS OF BEARINGS**

THE BEARING, N72°29'24"E, CALCULATED BETWEEN FOUND MONUMENTS ON ELDEN DRIVE AS SHOWN ON THAT PARCEL MAP RECORDED IN BOOK 798 OF MAPS AT PAGES 35-36, WAS USED AS THE BASIS OF BEARINGS FOR THIS SURVEY.

**NOTES**

1. ALL DISTANCES ARE SHOWN IN FEET AND DECIMALS THEREOF.
2. THE DISTINCTIVE BORDER DENOTES THE BOUNDARY OF THE SUBDIVISION.
3. THE AREA WITHIN THE DISTINCTIVE BORDER LINE IS 0.80 ACRES, MORE OR LESS.

**LEGEND**

- FOUND 3/4" IRON PIPE WITH TAG "RCE 14218" PER (2)
- FOUND MONUMENT, AS NOTED
- SET 3/4" IRON PIPE WITH CAP AND TACK, "LS 8398"
- SET 2 1/2" BRASS DISK IN MON BOX, STAMPED "LS 8398"
- STREET CENTERLINE
- - - - - DISTINCTIVE BORDER LINE
- - - - - EASEMENT LINE
- M LOT LINE

MEASURED BEARING, ANGLE OR DISTANCE  
RECORD INFORMATION PER 798 M 35-36  
RECORD INFORMATION PER 752 M 31  
RECORD INFORMATION PER 5 M 32-33  
E.M.E. EMERGENCY ACCESS EASEMENT  
I.E.E. INGRESS/EGRESS EASEMENT  
P.S.E. PUBLIC SERVICE EASEMENT  
P.P.E. PRIVATE PEDESTRIAN EASEMENT  
P.S.D.E. PRIVATE STORM DRAIN EASEMENT  
P.S.S.E. PRIVATE SANITARY SEWER EASEMENT

**PARCEL 1 798-M-36**

**TRACT NO. 10321**

CONSISTING OF THREE SHEETS

**ELDEN GLEN**

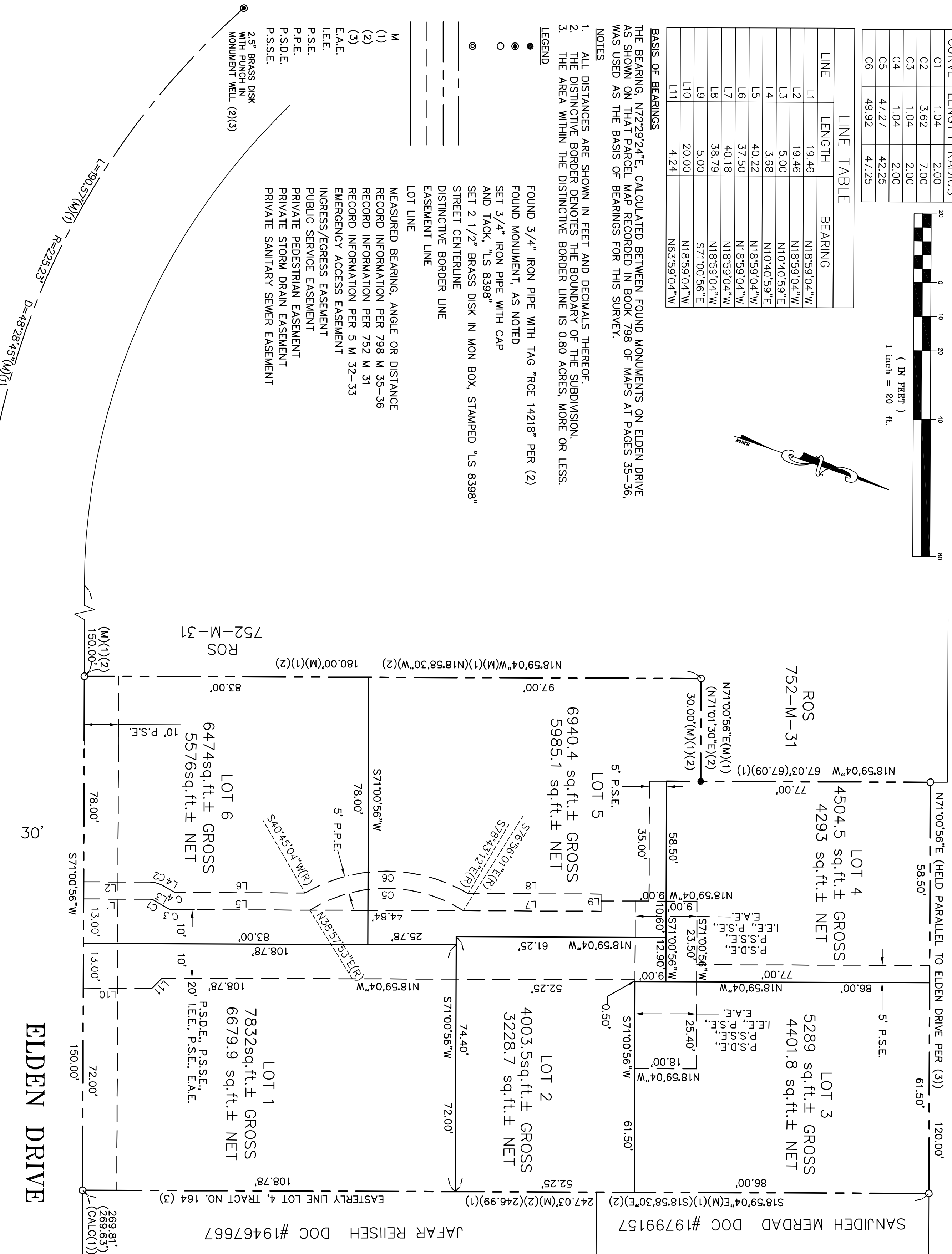
BEING A PORTION OF LOTS 4, 5 & 6 OF TRACT NO. 164 "CAMBRIAN MORNINGSIDE" FILED IN BOOK 5 OF MAPS AT PAGES 32-33 AND LYING WITHIN THE CITY OF SAN JOSE SANTA CLARA COUNTY, CALIFORNIA  
AUGUST 2016

**GARROLL**

**ENGINEERING**

*engineers and surveyors*

1101 S. WINCHESTER BLVD.  
SUITE H-184  
SAN JOSE, CA 95128



2.5" BRASS DISK WITH PUNCH IN MONUMENT WELL (2)(3)

664.62'(664.59' CALC PER(1))

**ELDEN DRIVE**

569.81'(M)(1)

L=96 R=270.00  
D=20'30"18'(20'30"02)(1)

BRASS PIN MONUMENT IN CONC. (2)(3)  
SHEET 3 OF 3